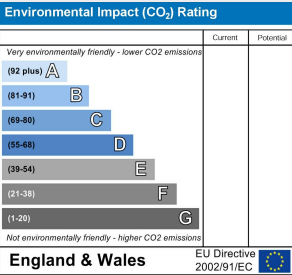
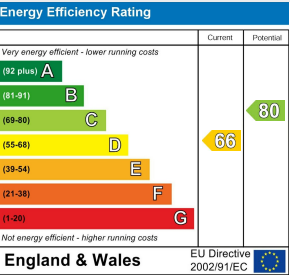


Paul Mason Associates



Maldon Road, Hatfield Peverel, Essex, CM3 2HL
Offers in excess of £500,000

- Charming semi detached property
- Splendid South-West facing rear garden, measuring approx 175' in length
- Three bedrooms
- Modern first floor bathroom plus ground floor cloakroom with utility area
- Sitting Room, separate dining room and wonderful garden room
- Fitted kitchen, open plan through to dining room
- Large driveway providing parking for up to six cars
- Detached outbuilding to the rear of the garden, ideal as home office/gym or similar
- Walking distance of village amenities, Primary School and train station
- EPC - TBC



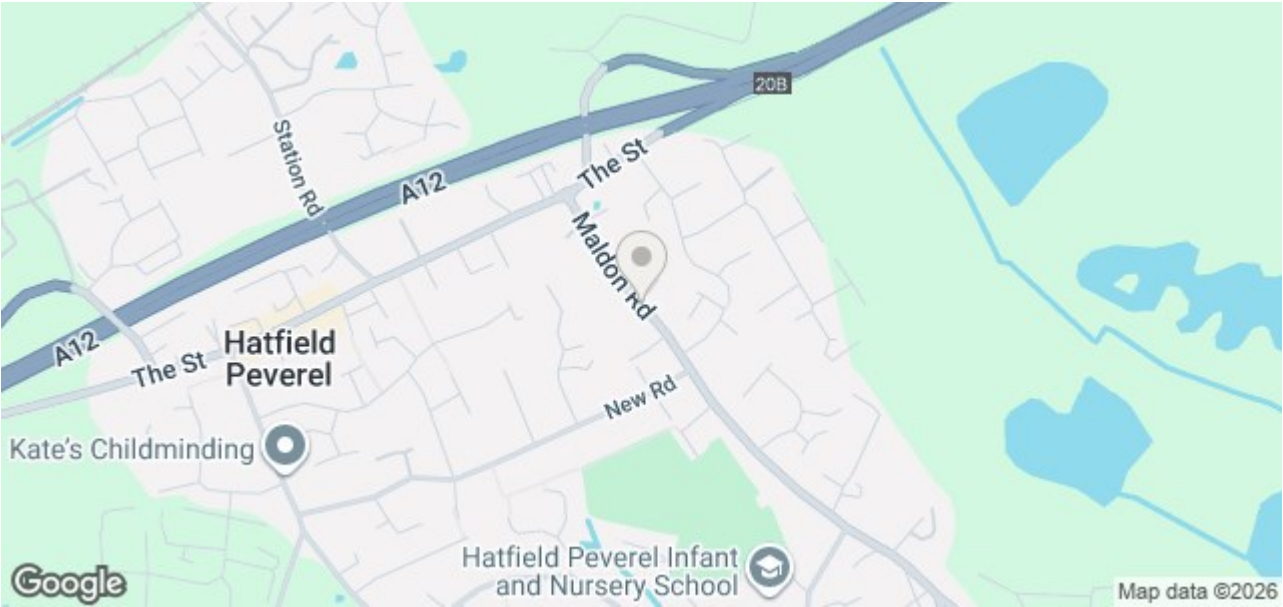
Paul Mason Associates are delighted to offer for sale this splendid semi detached property, set back from the road and boasting a wonderful secluded South/West facing rear garden measuring approx 175'.

The property is ideally positioned approx half a mile from the train station with direct links to London Liverpool Street. The highly regarded local Primary School is a short walk away, approx 0.3 miles, and many local amenities are also within easy reach, along with the popular Recreational Park.

The property is well presented throughout with the accommodation comprising three bedrooms, modern first floor bathroom plus ground floor cloakroom with utility area, sitting room with feature fireplace and bay window, fitted kitchen leading to the open plan dining room and wonderful 15'7 x 12'6 garden room.

To the front there is ample parking for up to six cars. The rear boasts a splendid approx 175' South-West facing garden with large outbuilding located to the rear, ideal as a home office/gym or similar, along with two useful sheds to remain.

An internal viewing is highly recommended to appreciate this wonderful property. Call today for more information.



Location.....

The property is located in the delightful village of Hatfield Peverel, steeped in history and surrounded by natural beauty, offering a tranquil retreat from the hustle and bustle of modern life.

Hatfield Peverel railway station is within easy access, offering regular services on the Greater Anglia line, with direct links to London Liverpool Street, making the village a popular choice for commuters to the capital, along with trains to Chelmsford and Colchester. The village is also conveniently located near major road networks, including the A12, a primary route connecting London and East Anglia.

There is a variety of dining and shopping options to satisfy every palate and preference. The village is home to a selection of charming pubs, cafes, and restaurants, including the highly regarded Blue Strawberry Bistro.

St. Andrew's Junior School is centrally positioned within the village. Secondary schooling can be found nearby in the Towns of Witham and Maldon. There is also further secondary and grammar schooling in the cities of Chelmsford and Colchester. Whilst in the private

sector there is New Hall and Felsted.

For nature lovers, there are an abundance of scenic walking trails and open spaces to explore. The village is historically significant due to the presence of the 11th century St. Andrew's Church, which stands on the site of a former Benedictine priory.

Whether you're drawn in by the sense of community, the stunning countryside, or the excellent schools, one thing's for sure, the village has got a whole lot to offer.

ACCOMMODATION

GROUND FLOOR

Entrance Hall

Sitting Room

3.98m x 3.46m + bay (13'0" x 11'4" + bay)

Dining Room

4.92m x 3.08m max (16'1" x 10'1" max)

Kitchen

4.56m x 2.97m max (14'11" x 9'8" max)

Utility Area/Cloakroom

Garden Room

4.76m x 3.82m (15'7" x 12'6")

FIRST FLOOR

Bedroom One

4.93m x 2.85m max (16'2" x 9'4" max)

Bedroom Two

3.72m x 2.29m (12'2" x 7'6")

Bedroom Three

2.52m x 2.21m (8'3" x 7'3")

Bathroom

Landing

EXTERIOR

Large Driveway

Approx 175' Rear Garden

Outbuilding

Property Services

Gas - Mains

Electric - Mains

Water - Mains

Drainage - Mains

Heating - Gas central heating

Local Authority - Braintree

Viewings

Strictly by appointment only through the selling agent Paul Mason Associates 01245 382555.

Important Notices

We wish to inform all prospective purchasers that we have prepared these particulars including text, photographs and measurements as a general guide. Room sizes should not be relied upon for carpets and furnishings. We have not carried out a survey or tested the services, appliances and specific fittings. These particulars do not form part of a contract and must not be relied upon as statement or representation of fact.

Floorplan



Paul Mason Associates

35 The Street
Latchingdon
Chelmsford
Essex
CM3 6JP
T: 01621 742 310

Bruce House
17 The Street
Hatfield Peverel
Chelmsford
CM3 2DP
T: 01245 382 555

Sales | Lettings | Development | Investment

F: 01245 381257 E: info@paulmasonassociates.co.uk www.paulmasonassociates.co.uk

Paul Mason Associates Limited Registered in England Number - 6767946
Registered Office - Bruce House, The Street, Hatfield Peverel CM3 2DP





Paul Mason Associates

35 The Street
Latchingdon
Chelmsford
Essex
CM3 6JP
T: 01621 742 310

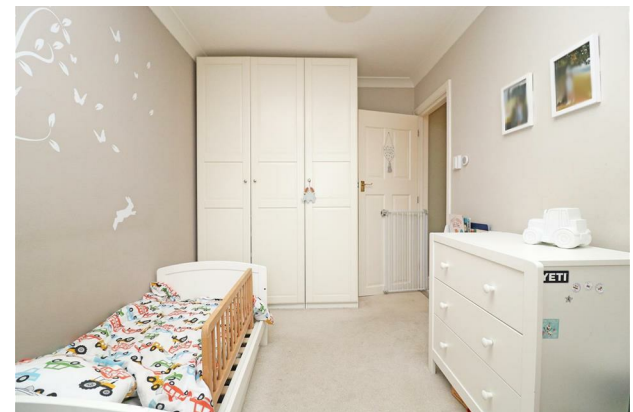
Bruce House
17 The Street
Hatfield Peverel
Chelmsford
CM3 2DP
T: 01245 382 555

Sales | Lettings | Development | Investment

F: 01245 381257 E: info@paulmasonassociates.co.uk www.paulmasonassociates.co.uk

Paul Mason Associates Limited Registered in England Number - 6767946
Registered Office - Bruce House, The Street, Hatfield Peverel CM3 2DP





Paul Mason Associates

35 The Street
Latchingdon
Chelmsford
Essex
CM3 6JP

T: 01621 742 310

Bruce House
17 The Street
Hatfield Peverel
Chelmsford
CM3 2DP

T: 01245 382 555

Sales | Lettings | Development | Investment

F: 01245 381257 E: info@paulmasonassociates.co.uk www.paulmasonassociates.co.uk

Paul Mason Associates Limited Registered in England Number - 6767946
Registered Office - Bruce House, The Street, Hatfield Peverel CM3 2DP





Paul Mason Associates

35 The Street
Latchingdon
Chelmsford
Essex
CM3 6JP

T: 01621 742 310

Bruce House
17 The Street
Hatfield Peverel
Chelmsford
CM3 2DP

T: 01245 382 555

Sales | Lettings | Development | Investment

F: 01245 381257 E: info@paulmasonassociates.co.uk www.paulmasonassociates.co.uk

Paul Mason Associates Limited Registered in England Number - 6767946
Registered Office - Bruce House, The Street, Hatfield Peverel CM3 2DP

